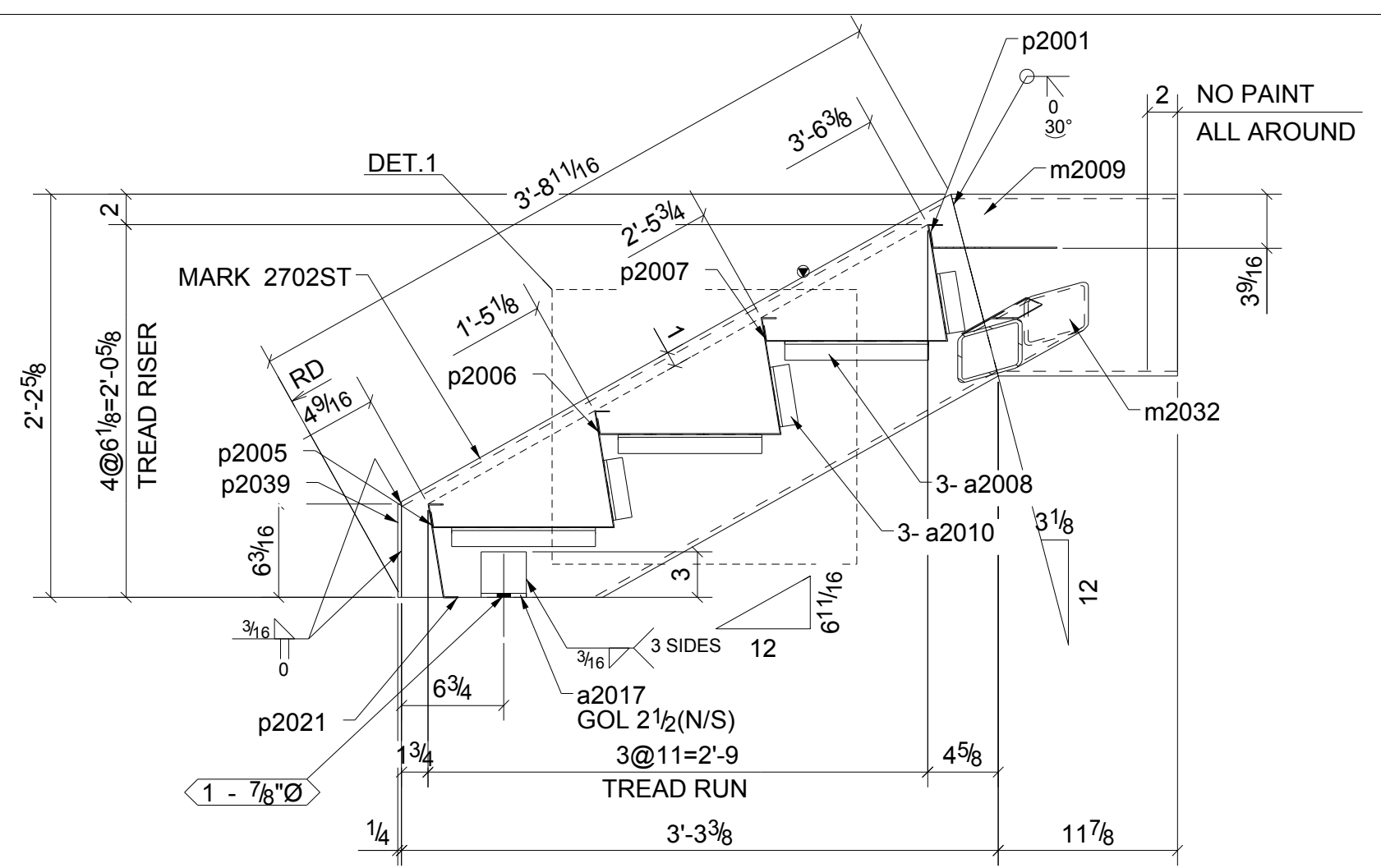
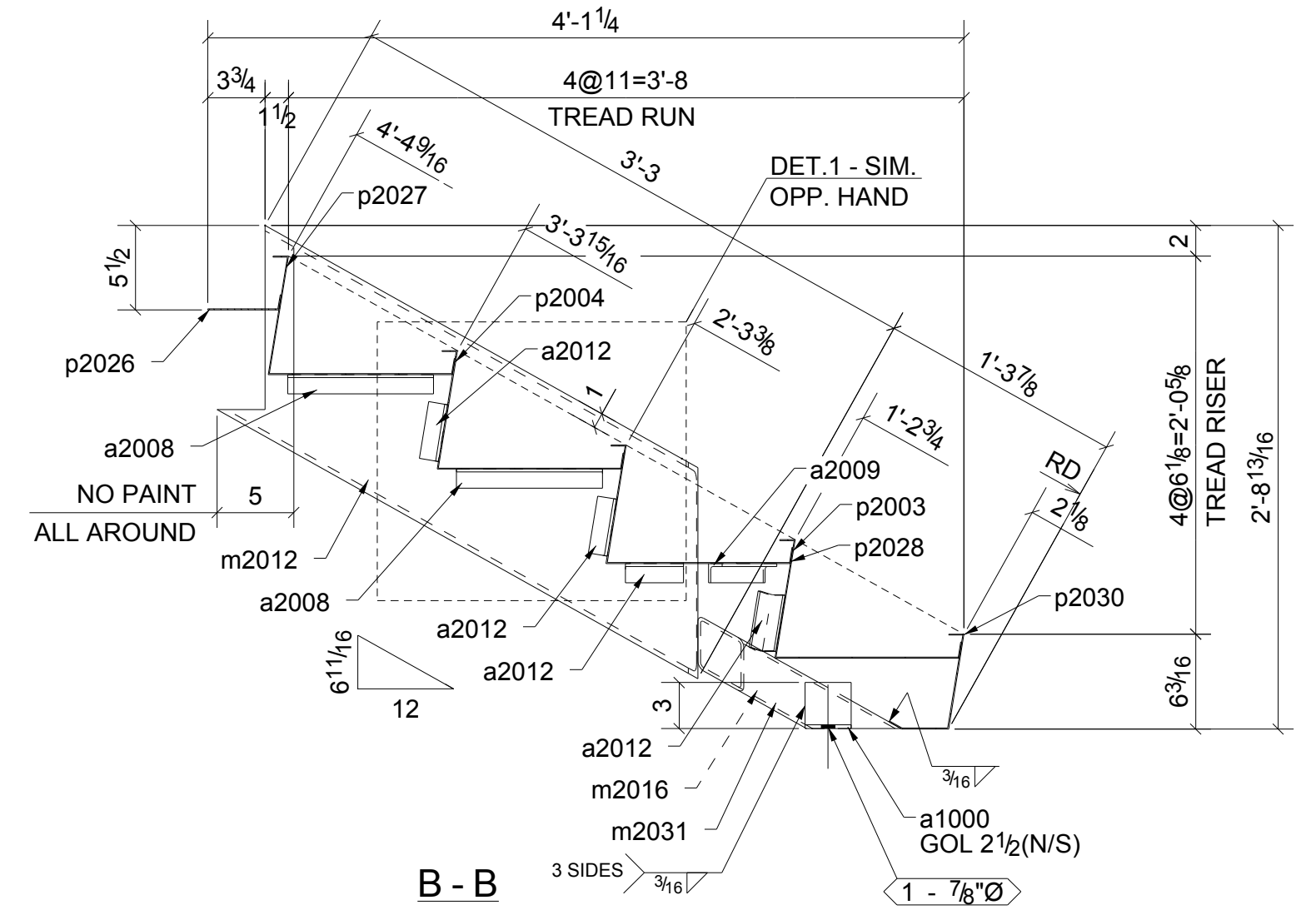


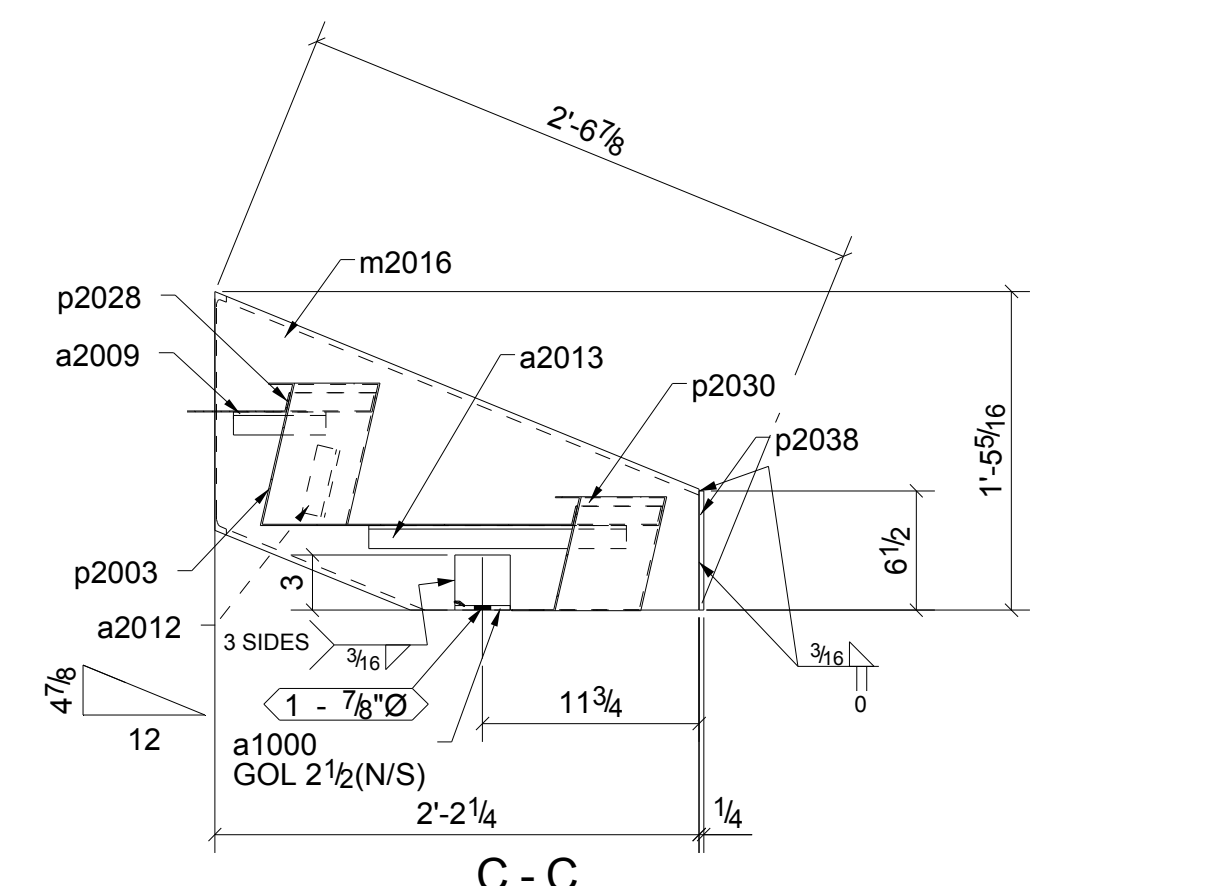
PLAN VIEW



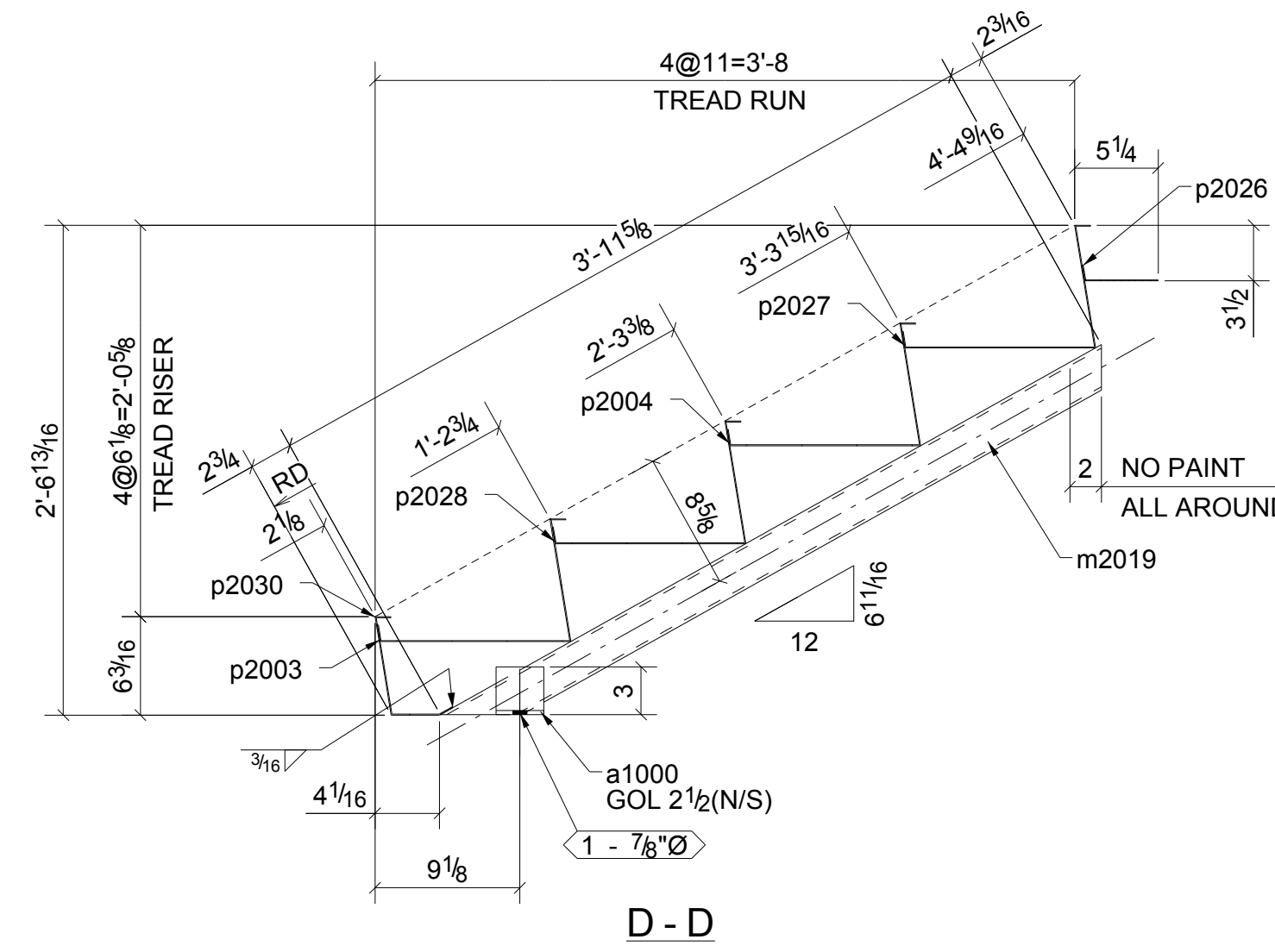
A - A



B - B



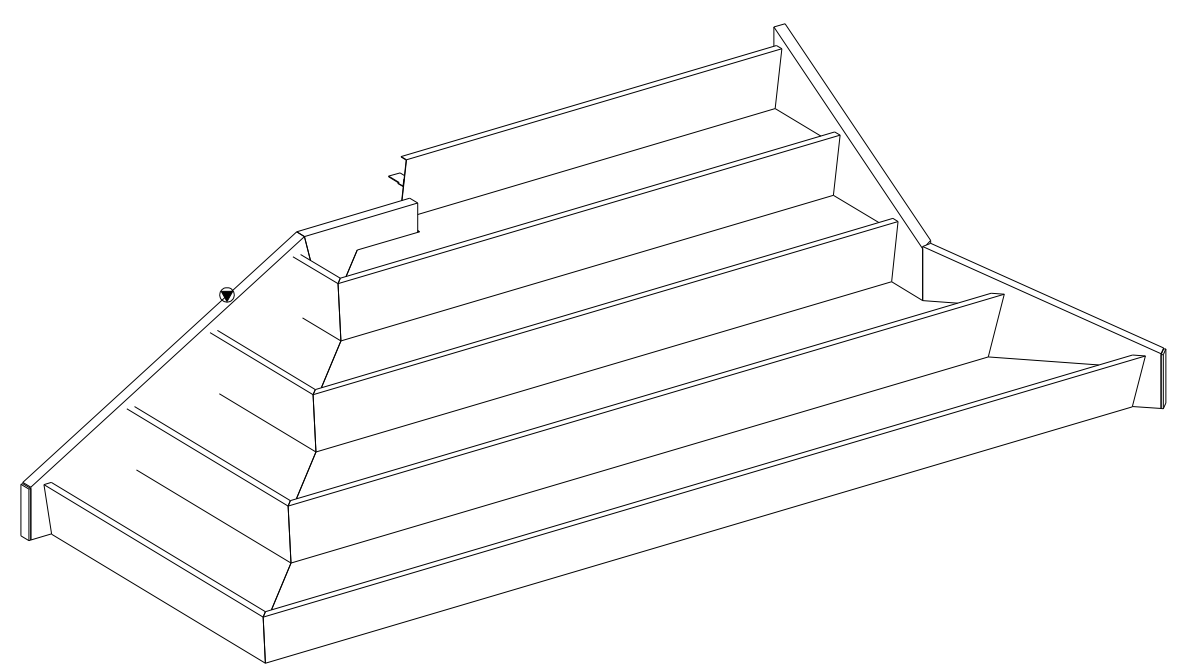
C - C



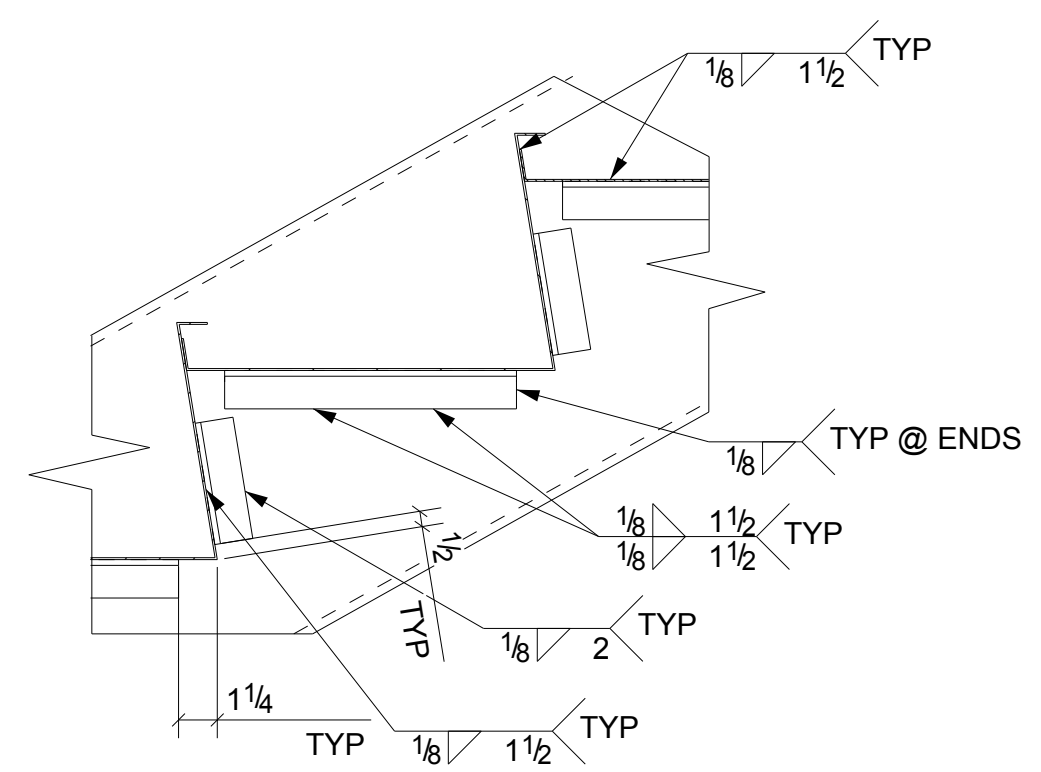
D - D

ONE - STAIR - 2702ST

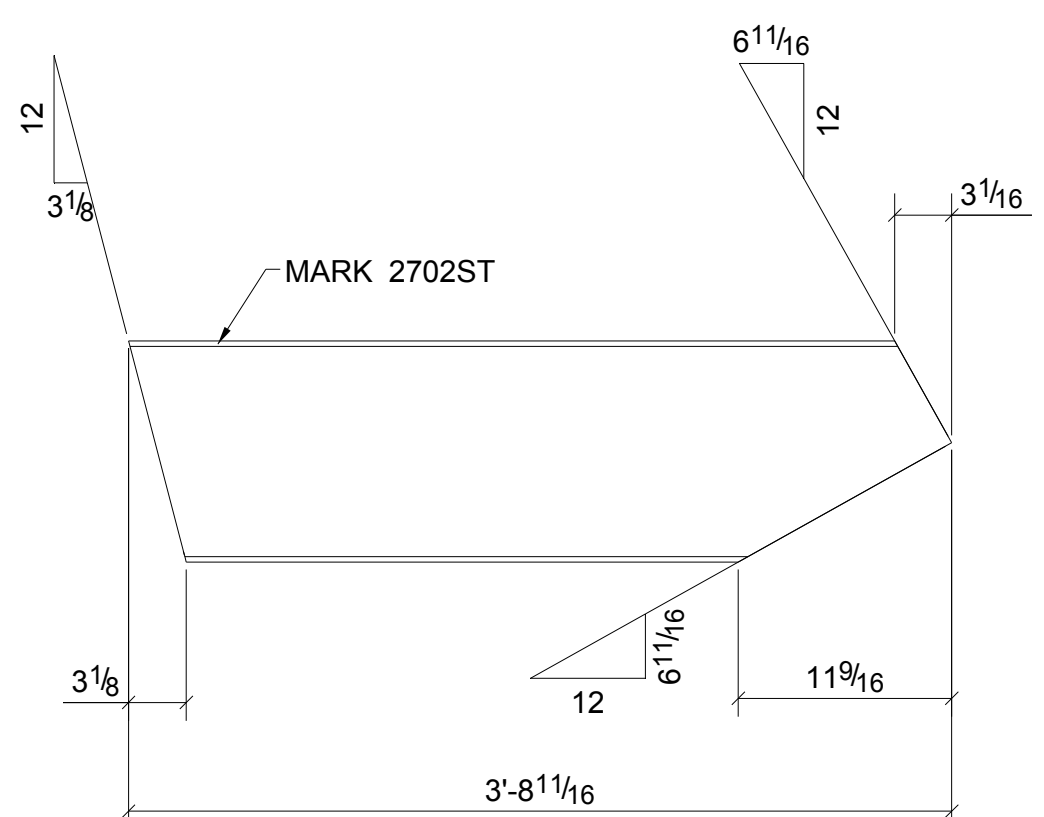
GRIND SMOOTH ALL SHARP CORNERS & BURRS



3D VIEW



DETAIL - 1
TYP. PAN WELDING AT ANGLE SUPPORTS



BILL OF MATERIAL				
MARK	QTY	DESCRIPTION	LENGTH	REMARKS
2702ST	1	MC12X10.6	3'-8 11/16"	A36
a1000	4	L4X3X1/4	0'-3"	A36
a2008	5	L1-1/4X1-1/4X3/16	0'-9 1/2"	A36
a2009	1	L1-1/4X1-1/4X3/16	0'-5"	A36
a2010	3	L1-1/4X1-1/4X3/16	0'-4"	A36
a2012	4	L1-1/4X1-1/4X3/16	0'-3 3/4"	A36
a2013	1	L1-1/4X1-1/4X3/16	1'-2"	A36
a2017	1	L4X3X1/4	0'-3"	A36
m2009	1	MC12X10.6	1'-3"	A36
m2012	1	MC12X10.6	3'-3"	A36
m2016	1	MC12X10.6	2'-6 13/16"	A36
m2019	1	HSS2-1/2X2-1/2X3/16	3'-11 5/8"	A500-GR.B
m2031	1	HSS3X3X3/16	1'-3 3/16"	A500-GR.B
m2032	1	HSS3X3X3/16	4'-8 13/16"	A500-GR.B
p2000	1	SHT14GAX2 3/4"	3'-9"	A36
p2001	1	SHT14GAX8 3/8"	0'-9 1/8"	A36
p2003	1	SHT14GAX21 1/2"	9'-8 11/16"	A36
p2004	1	SHT14GAX21 1/2"	6'-5 3/8"	A36
p2005	1	SHT14GAX21 1/2"	3'-5 3/8"	A36
p2006	1	SHT14GAX21 1/2"	2'-6 3/8"	A36
p2007	1	SHT14GAX19 3/8"	1'-9 1/2"	A36
p2021	1	SHT14GAX8"	3'-5 1/2"	A36
p2026	1	SHT14GAX5 1/2"	4'-1 11/16"	A36
p2027	1	SHT14GAX21 1/2"	5'-6 3/8"	A36
p2028	1	SHT14GAX21 1/2"	7'-10 9/16"	A36
p2030	1	SHT14GAX11"	9'-8 7/8"	A36
p2038	1	FL1/4"x1 1/2"	0'-6 7/16"	A36
p2039	1	FL1/4"x1 1/2"	0'-6 1/8"	A36
	5	3/4"Ø WEDGE_ANC BOLT	0'-5 1/2"	Site

CLEAN: SSPC-SP3	PAINT: ONE COAT STD SHOP PRIMER	WELDS: E70XX	HOLES: AS NOTED
PROJECT NAME: STAIR		DATE DRAWN: 09/25/2014	DRAWN BY: JES
DETAILING CO.: Oracle Steel Consultants Ltd.		CHECKED BY: EDG	
ORACLESTEEL Consultants Ltd			
CONTRACTOR: FARMINGTON SENIOR LIVING		LOCATION: Farmington, Connecticut	
CUSTOMER P.O.:		REF. DRG: E2001	
JOB No. 14136	SEQ: 2	DRG No. 2702ST	REV. 0

REV.	DESCRIPTION	DATE
0	Issued For Fabrication	11/19/14
A	Issued For Approval	10/21/14