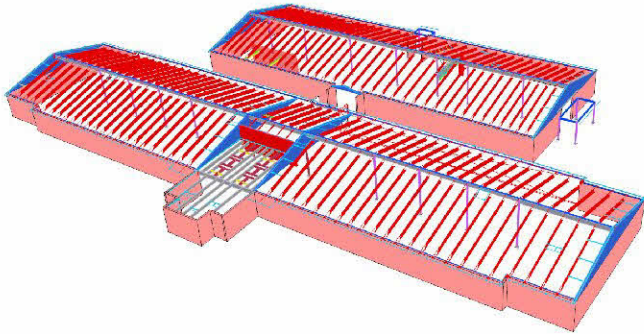
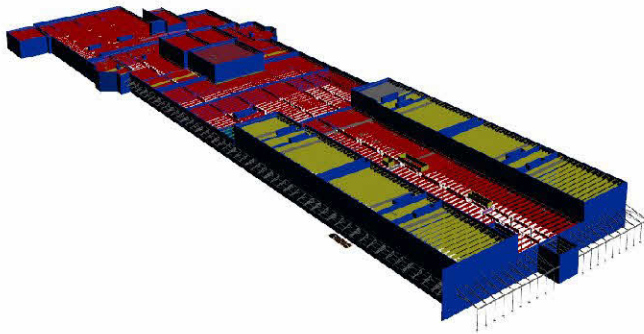


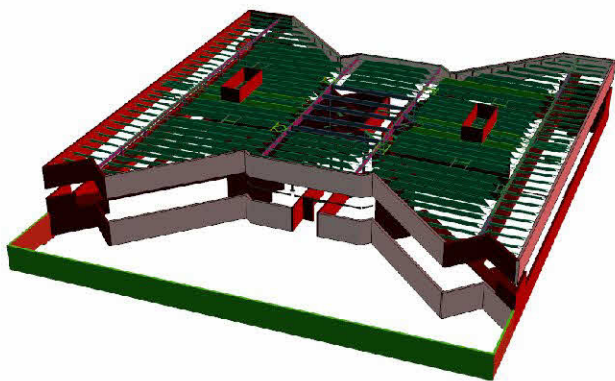
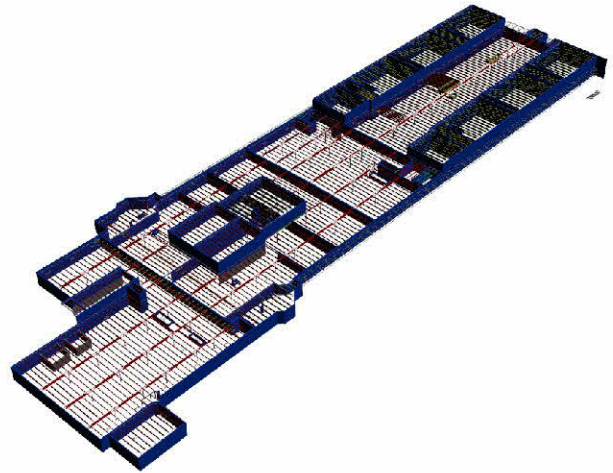
Oracle Steel Consultants Ltd.



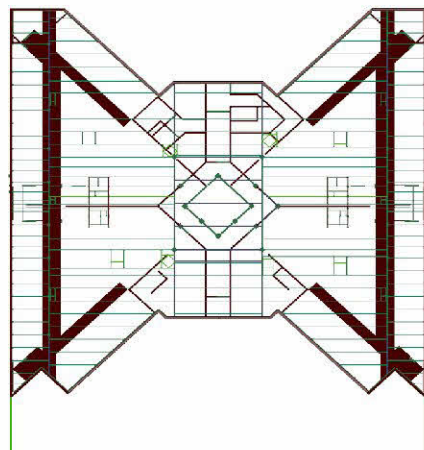
Female Transition Unit (SCI Phoenix Prison)
20 tons



ADMINISTRATION BUILDING (SCI Phoenix Prison)
80 tons



HOUSE UNIT TYPE B (SCI Phoenix Prison)
33 tons



Let us detail your next fabrication project and let our expertise turn your project into a successful one...