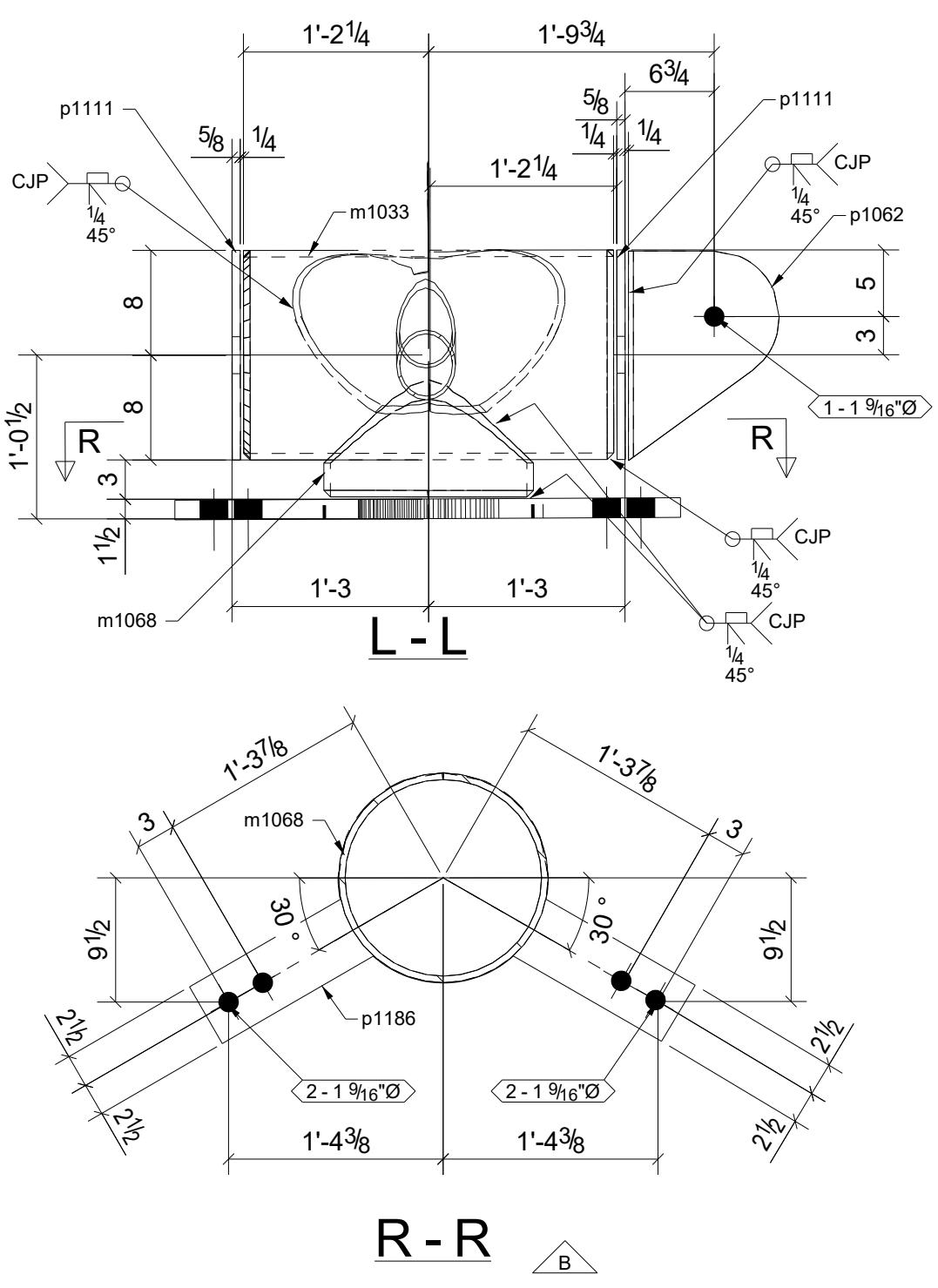
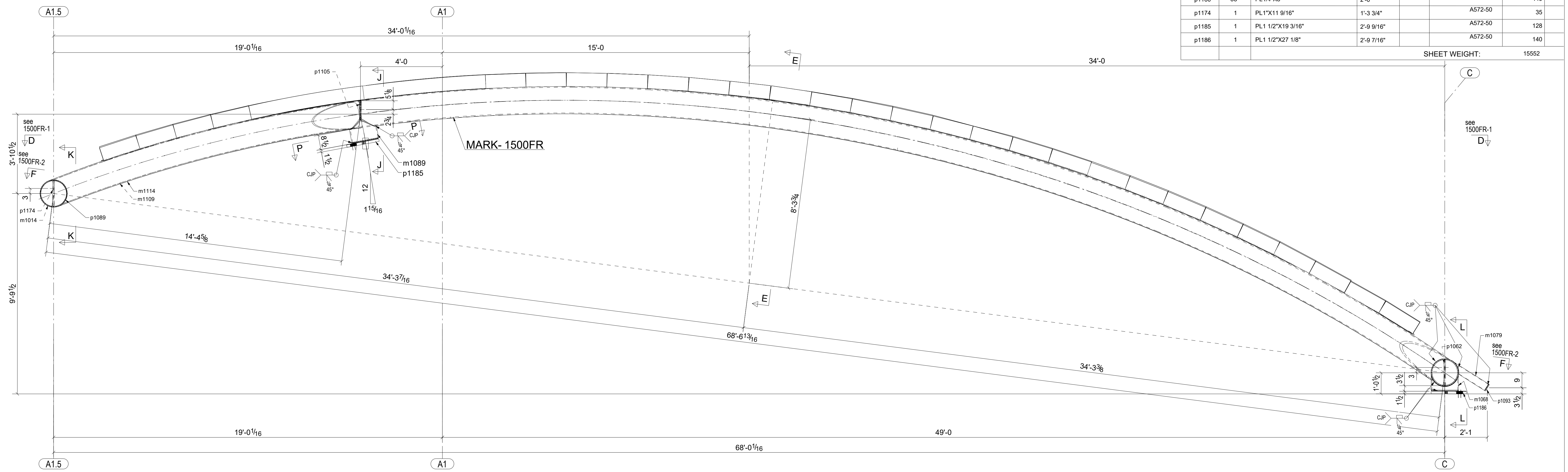


MARK- 1500FR

SHOPE NOTE:
 HORIZONTAL DECK PLATE IS;
 PARALLEL ALONG THE TOP OF
 TWO PIPES ALWAYS CENTERED @ PIPE ALONG
 HORIZONTAL & VERTICAL CURVATURE.
 VERTICAL PLATE IS ALWAYS:
 CENTERED @ PIPE ALONG
 HORIZONTAL AND VERTICAL
 CURVATURE



MARK	QTY	SIZE	LENGTH		ABM	REMARKS	WEIGHT	LINE #
			FT	IN				
1500FR	1	FRAME						
1500FR	1	HSS16X0.500	56'-4	5/8"		A500-GR.C	4356	
m1014	1	HSS16X0.500	11'-8	1/2"		A500-GR.C	904	
m1033	1	HSS16X0.500	2'-4	1/4"		A500-GR.C	182	
m1068	1	HSS16X0.500	0'-9"			A500-GR.C	58	
m1079	1	PIPE4STD	1'-11	11/16"		A53	20	
m1089	1	HSS16X0.500	1'-1	3/8"		A500-GR.C	86	
m1109	1	HSS16X0.500	16'-6"			A500-GR.C	1275	
m1114	1	HSS16X0.500	72'-9	1/16"		A500-GR.C	5621	
p1031	54	PL1/2"X8"	2'-0"			A572-50	1470	
p1040	1	PL1/2"X8"	12'-0	5/8"		A572-50	164	
p1041	1	PL1/2"X8"	6'-0	3/16"		A572-50	82	
p1042	1	PL1/2"X8"	5'-10	9/16"		A572-50	80	
p1052	1	PL5/8"X16"	1'-4"			A572-50	35	
p1062	1	PL1"X11 1/2"	1'-4"			A572-GR.50	36	
p1074	32	PL1/4"X4"	2'-0"			A572-50	218	
p1075	2	PL1/2"X8"	1'-11	7/8"		A572-50	54	
p1087	1	PL1/4"X8"	1'-10	15/16"		A572-50	9	
p1089	1	PL5/8"X16"	1'-4"			A572-50	35	
p1090	1	PL1/4"X4"	1'-4	3/8"		A572-50	4	
p1093	1	PL3/8"X4 1/2"	0'-4	1/2"		A572-50	2	
p1100	1	PL1/4"X4"	2'-0"			A572-50	7	
p1105	1	PL1"X11 1/4"	1'-4	9/16"		A572-50	31	
p1111	2	PL5/8"X16 1/4"	1'-4	1/4"		A572-50	72	
p1160	33	PL1/4"X8"	2'-0"			A572-50	449	
p1174	1	PL1"X11 9/16"	1'-3	3/4"		A572-50	35	
p1185	1	PL1 1/2"X19 3/16"	2'-9	9/16"		A572-50	128	
p1186	1	PL1 1/2"X27 1/8"	2'-9	7/16"		A572-50	140	



DRAWING NOTES:
 MATERIAL: AS NOTED UNO
 HOLES: AS NOTED UNO
 ELECTRODES: E70XX
 ENG. REF. DRG. No. E - DRG REF: E1001

ORACLESTEEL
 Consultants Ltd



COATINGS	GALVANIZING <input checked="" type="checkbox"/> YES <input type="checkbox"/> NO	MASKING REQD	<input type="checkbox"/> YES <input type="checkbox"/> NO	DRAWN BY	FN	DATE	07/13/2017
SURFACE PREP:	SSPC-SP10	DFT		CHKD BY	EDG	DATE	11/28/2017
PRIME COAT:	ZINC RICH PRIMER			JOB COORDINATOR			
SECOND COAT:				JOB No.	7170080	DRG No.	1500FR
TOP COAT:							

0	Issue For Fabrication	12/21/2017					
B	Re-issued for Approval	12/01/17					
A	Issued for Approval	08/16/17					
REV	REMARKS	DATE	DWN	XO			

ONE - FRAME - 1500FR
AS BUILT POSITION

GALVANIZER TO PROVIDE
WEEP/VENT HOLES
SIZES AND LOCATION

SHOP NOTE:
GROUND FLUSH ALL CJP WELD

WORK THIS DRAWING WITH DWG 1500FR-1, 1500FR-2, 1500FR-3

DESCRIPTION: ROLLED-FRAME
 JOB: CASEY ARBORWAY, UPPER BUSWAY CANOPY
 CUSTOMER: