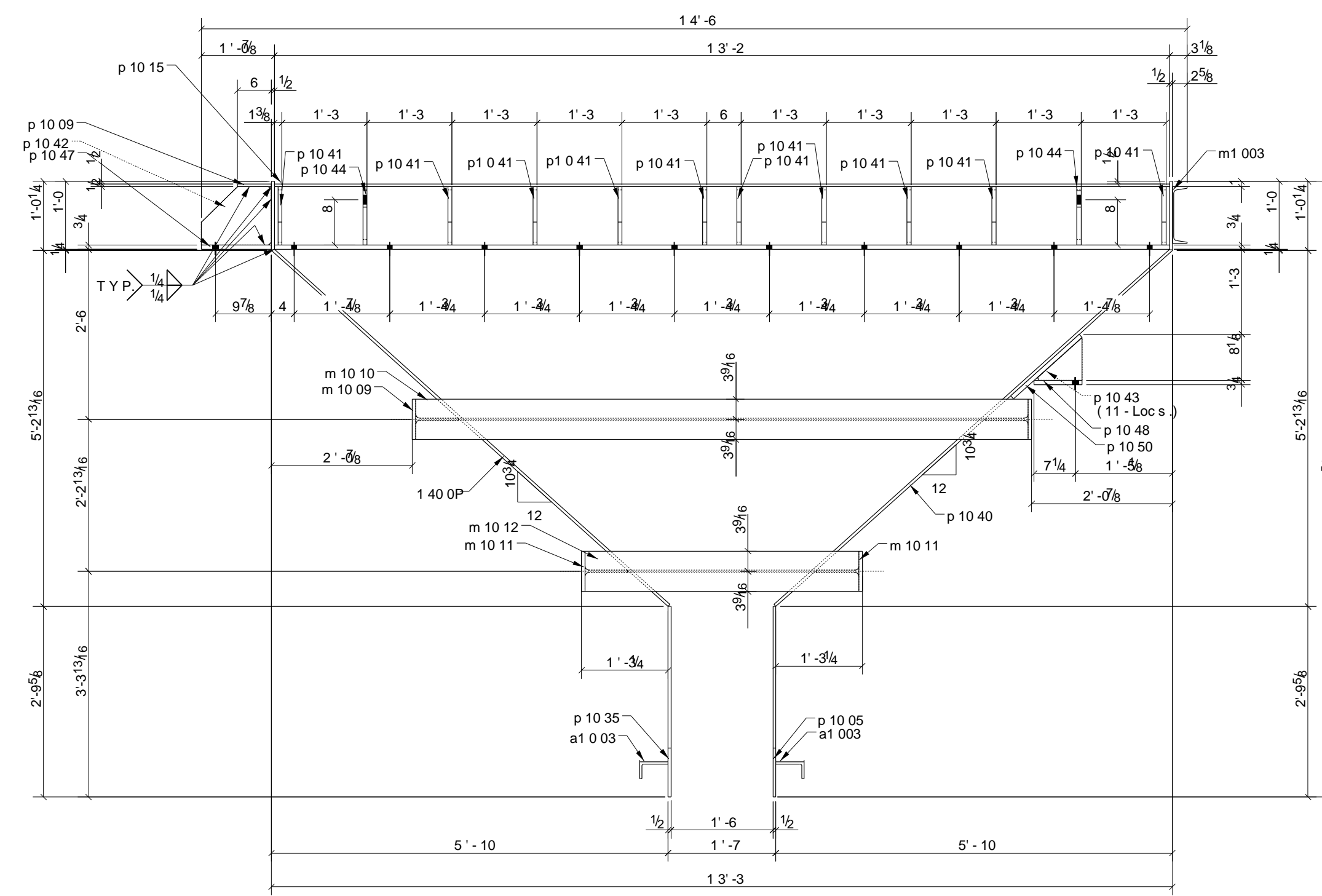
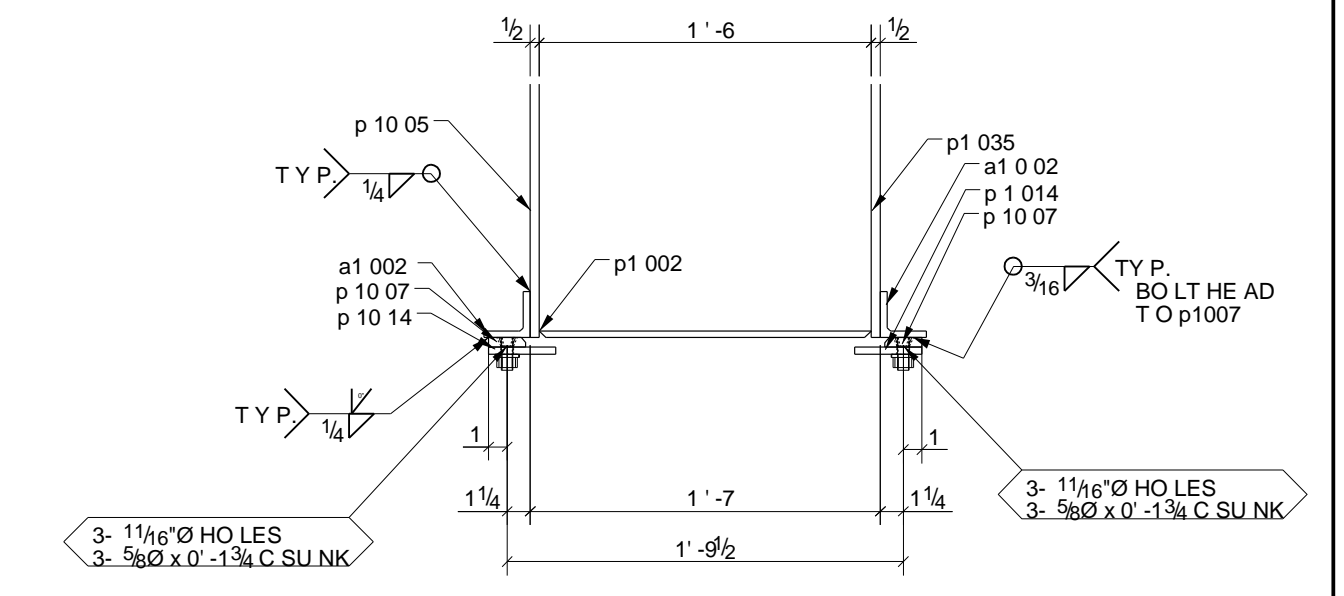


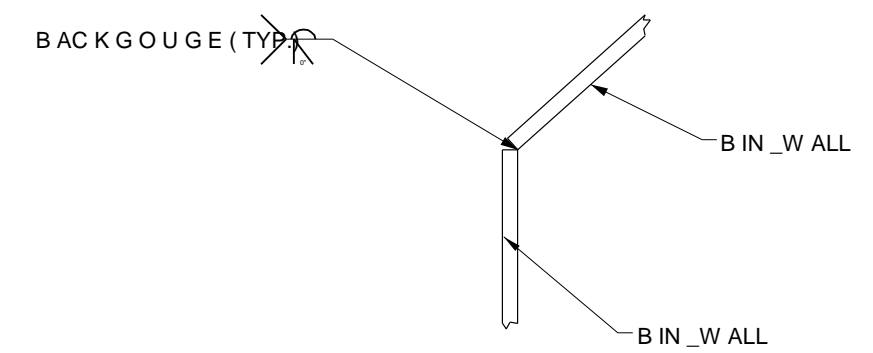
A-A



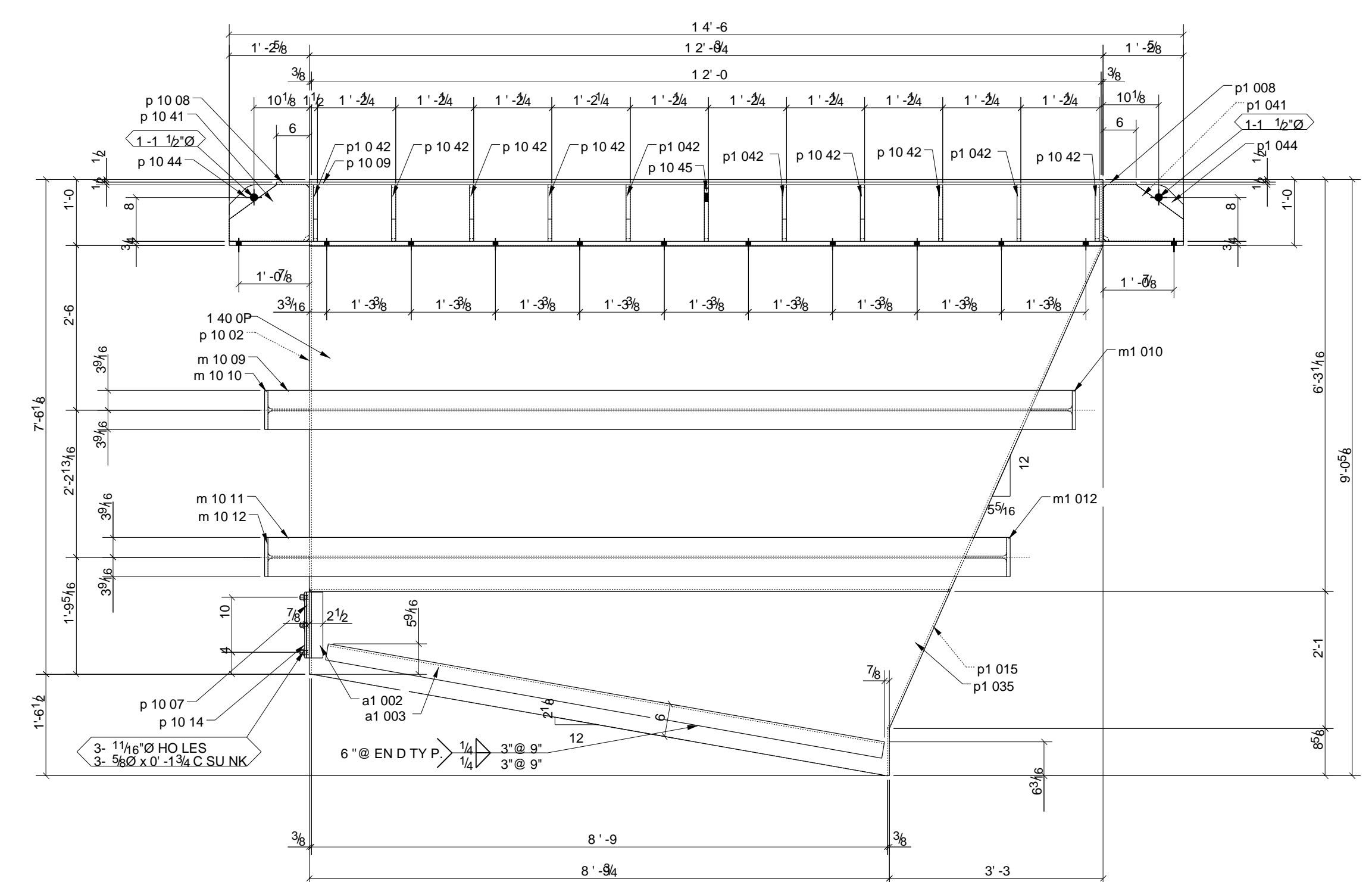
C-C



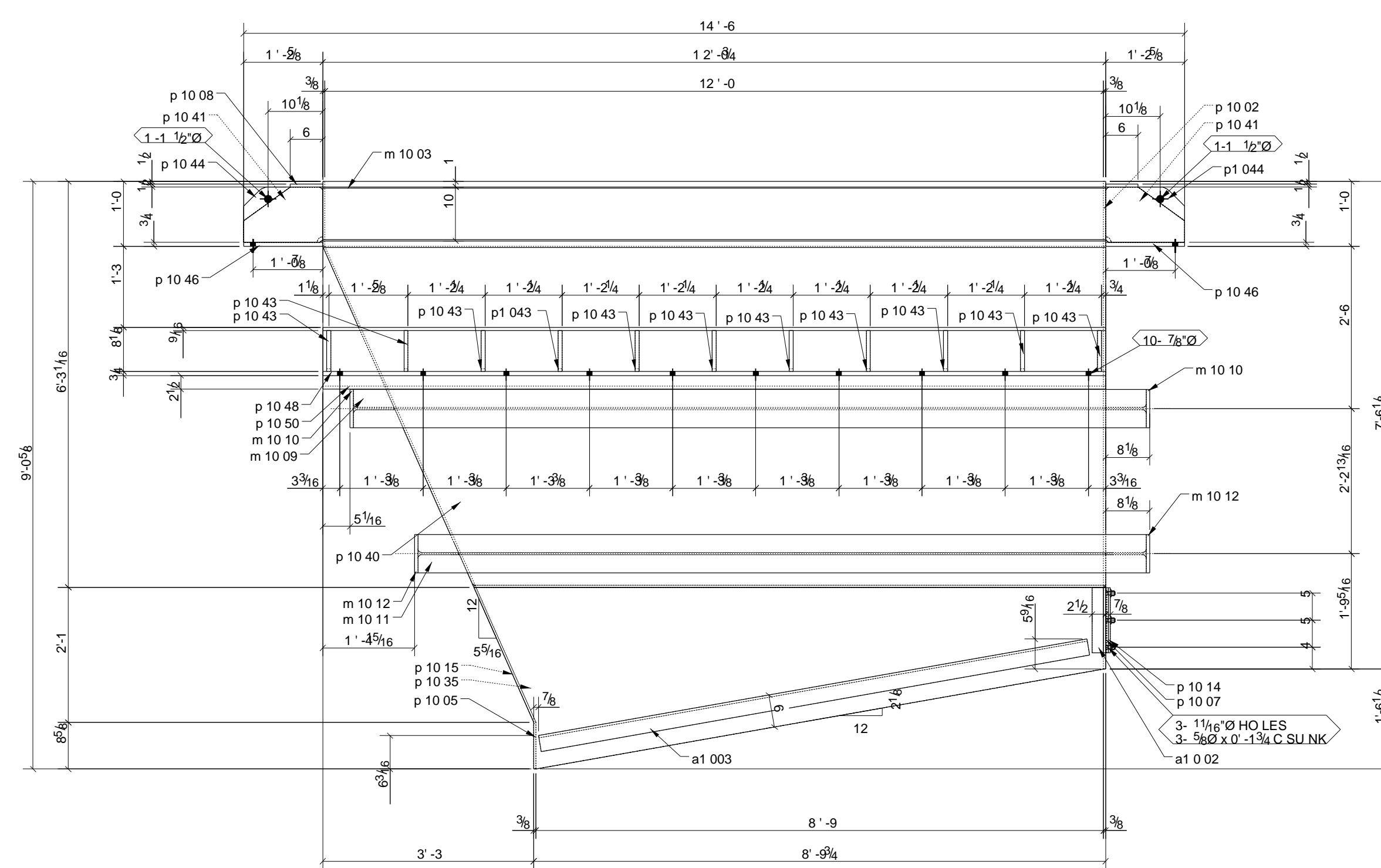
E-E



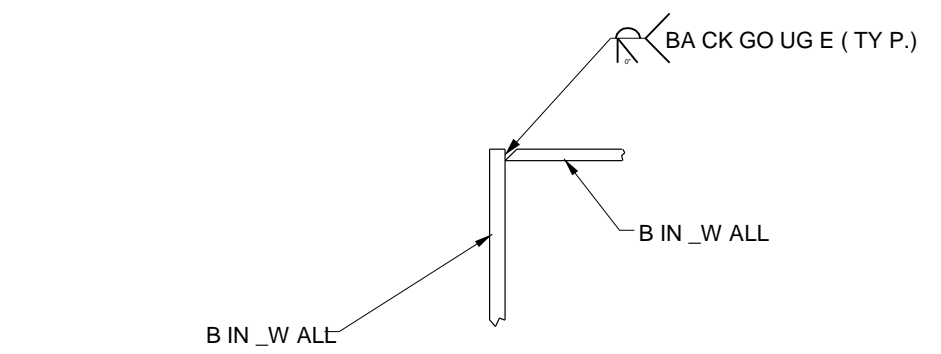
DETAIL-1
TYPICAL W EL DED JO INT @ HOPPER TO B= VERTICAL WALL PLATE



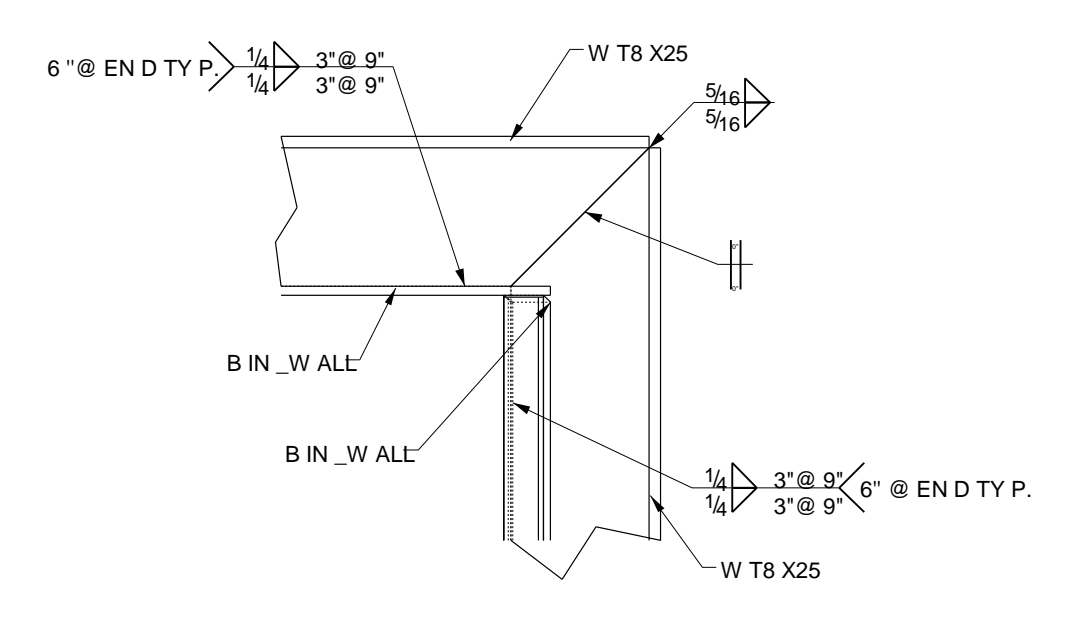
B-B



D-D



DETAIL-2
TYPICAL CORNER WELD



DETAIL-3
TYPICAL W T8x25 STIFFENER CORNER WELD

ONE HOPPER#2- 1400P-A

* WORK THIS SHEET WITH DRAWING SHEET Nos. 1400P & 1400P-B

PROJECT NAME
TRUCK DUMP STATION HOPPER
LOCATION
SANDERS, ARIZONA
CONTRACTOR
PREFERRED RESIN OF ARIZONA, LLC.

Oracle Steel Consultants Ltd.
www.oraclesteel.com.

DATE	NO.	DESCRIPTION	BY	DESCRIPTION	SEQUENCE	DATE	DATE	DATE	DRGN.
12/21/11	1	Issued For Fabrication		HOPPER #2 SEC T'S		11/27/2011	11/29/2011		1400P-A