



ORACLESTEEL

CONSULTANTS LTD

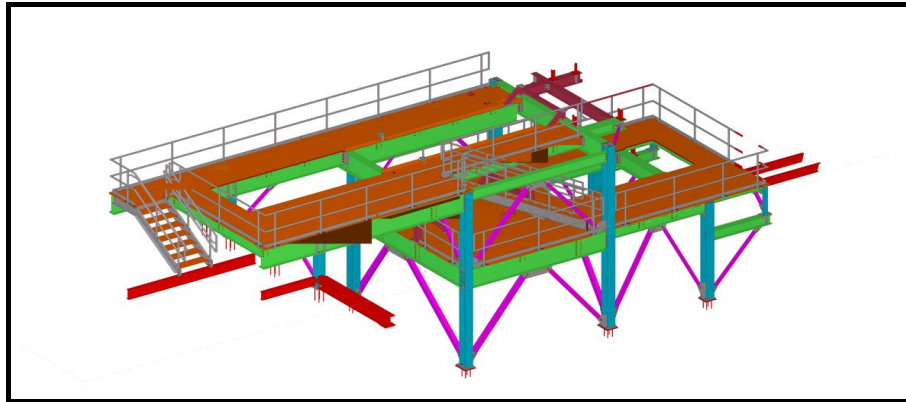
Specializing in Structural & Miscellaneous Steel Detailing
with the use of Tekla Structures 3D Modeling Software.

Parksville B.C. Canada

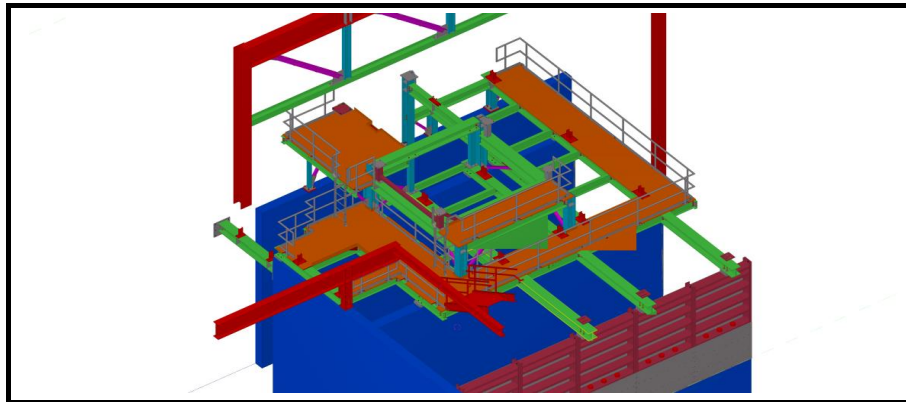
www.oraclesteel.com

Project: COVANTA ESSEX AREA 3
Tonnage: 100

Address: 183 Raymond Blvd,
Newark, NJ. U.S.



3D Render View [BLDG-B]



3D Render View [BLDG-C]

Contact Us:

For more information on our services or to receive a quote, please contact us at **250-947-9499**,
or email us at **Team@oraclesteel.com**.

References available upon request.

Thank you for considering Oracle Steel Consultants Ltd for your steel drafting needs. We look forward to the opportunity to work with you.

Let us detail your next Fabrication Project and have our expertise turn your project into a successful one...